

Karaka

2 Bdrm / 89m²

This bach style home with clean, mid-century modern lines is just waiting for you to put your stamp on it. Casual and compact, it features open plan living areas, a sheltered entry area and a bathroom with separate shower and bath. A compatible carport or garage can be added if needed.



2 BEDROOMS



1 TOILET



1 BATHROOM



2 LIVING ROOMS



✓ SEPARATE LAUNDRY



Artist's Impression Only

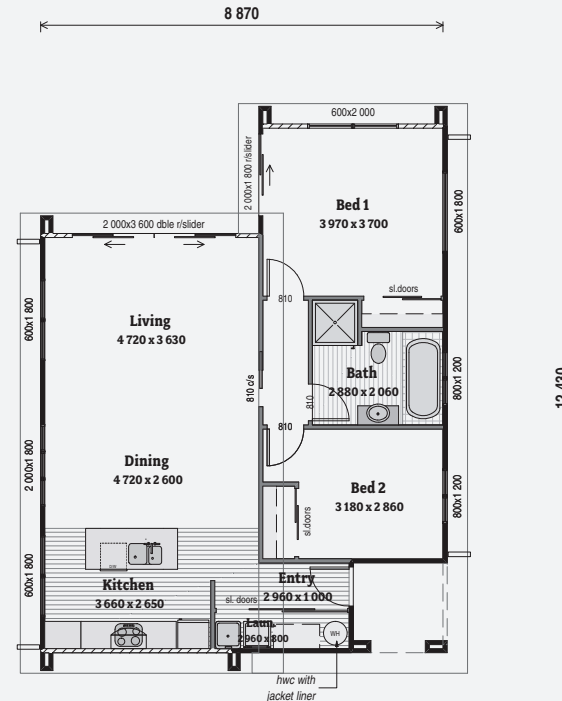
KEY FEATURES OF THIS HOME

- Weatherboard and Axon Panel cladding
- Mono pitch roof
- Open plan living



Elevation Guide

Floor Area
89.3m² o/frame





Floor Area
89.3m² o/frame

