

# Tororaro

3 Bdrm / 160m<sup>2</sup>

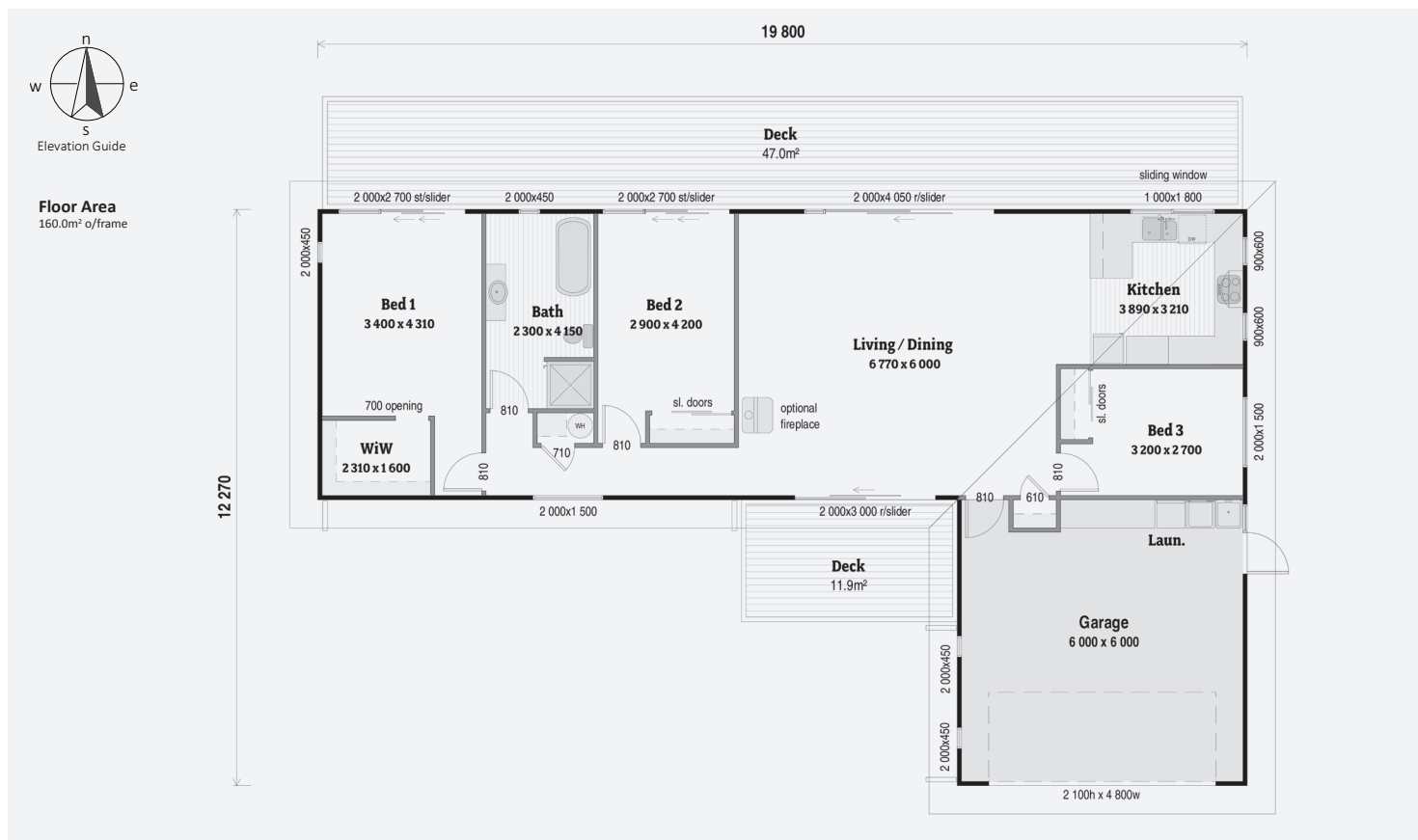
Simple yet effective design makes highly efficient use of space, with open plan living/dining/kitchen, and decking the full length of the back of the house. The design is easy to tailor to your needs, and the functional bathroom is ideal for a young family.



Artists Impression Only

## KEY FEATURES OF THIS HOME

- Bevelback weatherboard cladding
- Open plan living
- Flexibility to be a transportable home
- Double garage





**Floor Area**  
160.0m<sup>2</sup> o/frame

12 270

19 800

